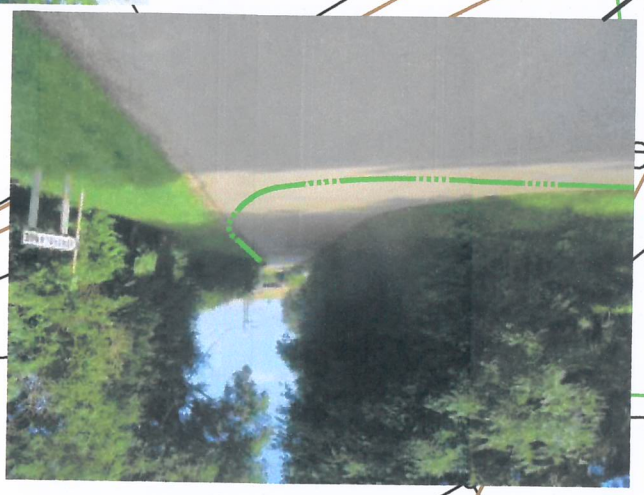
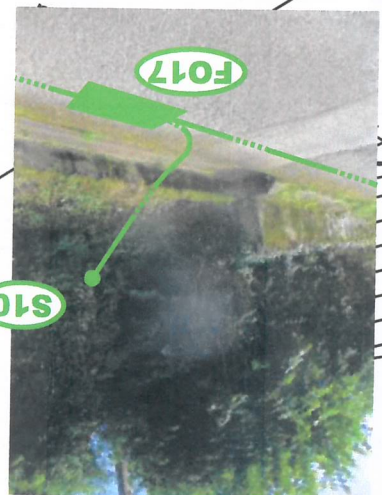
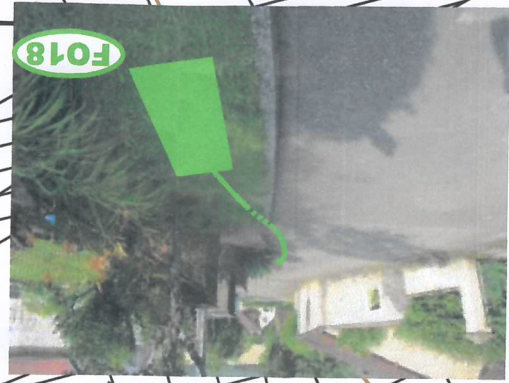




- 25410 FERRIERES
- 25410 FERRIERES
- FERRIERES LES
- FERRIERES LES



FO19

ELEMENT EXISTANT

L2T existante

EXISTANT :
Chambre type L2T existante

25235-21

POSE :
2 Percement(s)

ELEMENT A POSER

Poteau SMIX + Coude FT 90

S11

ELEMENT A POSER

Poteau SMIX + Coude FT 90

POSE :
1 Poteau SMIX
2 Coude(s) 90°+ réduction(s)

FO17

ELEMENT A POSER

L2C

POSE :
1 Chambre type L2C
avec Fond
8 Percement(s)

ELEMENT A POSER

Coude FT 90

S10

ELEMENT A POSER

Coude FT 90

POSE :
2 Coude(s) 90°+ réduction(s)

BT93